

LAND FOR SALE

Catoma Industrial Park— Montgomery, Alabama



Foreign Trade Zone

Parcel A

97.83 Acres/54.15 acres (rectangular in shape) is pastureland, 43.68 Acres (irregular shape) adjacent to Catoma Creek lies in the 100 year flood plain

Zoning—M1— Industrial
Offering Price— \$372,000

Parcel B

26.47 Acres with 10.35 acres in flood plain.
Zoning— M1—Industrial
Offering Price—\$178,000

Parcel C

35.49 Acres with 26.62 acres in flood plain.
Zoning—M1— Industrial
Offering Price— \$135,000

All Utilities are Available



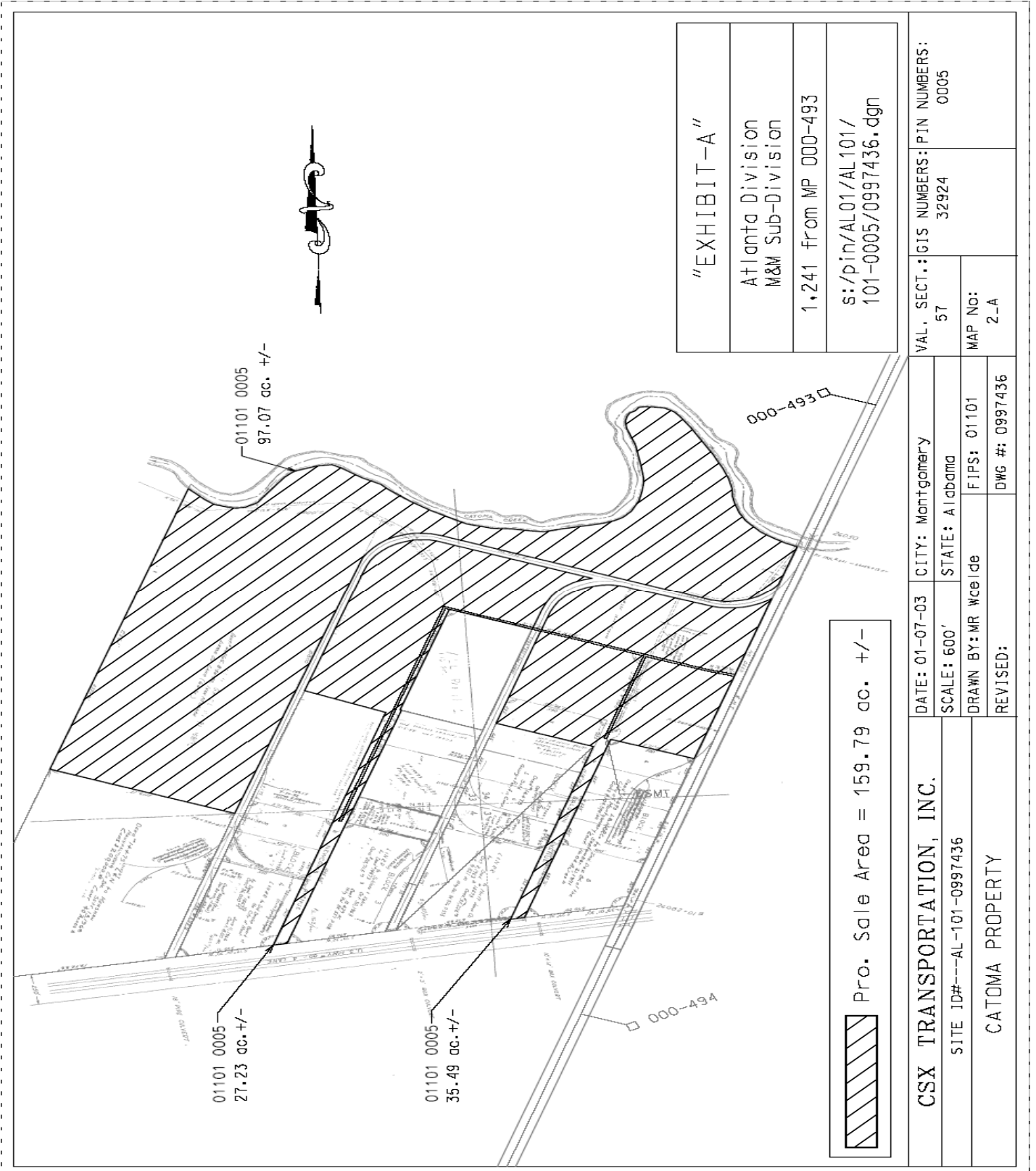
Contact Information **Richard Crunkleton, CCIM**

(256) 536.8809 Office
(256) 679.1969 Mobile
(256) 536.9119 Fax
Email: Richard@CrunkletonAssociates.com

201 Williams Avenue, Suite 200
Huntsville, AL 35801
www.CrunkletonAssociates.com

CRUNKLETON & ASSOCIATES, LLC

COMMERCIAL INVESTMENT REAL ESTATE



"EXHIBIT-A"
 Atlanta Division
 M&M Sub-Division
 1,241 from MP 000-493
 s:/pin/AL01/AL101/
 101-0005/0997436.dgn

CSX TRANSPORTATION, INC.		DATE: 01-07-03	CITY: Montgomery	VAL. SECT.: 57	GIS NUMBERS: 32924	PIN NUMBERS: 0005
SITE ID#---AL-101-0997436		SCALE: 600'	STATE: Alabama			
CATOMA PROPERTY		DRAWN BY: MR Wc Ide	FIPS: 01101	MAP NO: 2-A		
		REVISED:	DWG #: 0997436			