

Land Available

Great location for Multi-Family Housing!



Palmer Road

Located directly south of the intersection of County Line Road and Palmer Road. This is one of the fastest growing areas of Madison County with new subdivisions being built all along County Line Road. The property contains 11.57 acres and is ready for development. The property is zoned Restricted Industrial and is competitively priced at \$65,000 per acre.



Contact Information

Richard Crunkleton, CCIM

(256) 536.8809 Office
 (256) 679.1969 Mobile
 (256) 536.9119 Fax
 Email: Richard@CrunkletonAssociates.com

Wesley Crunkleton, CPM

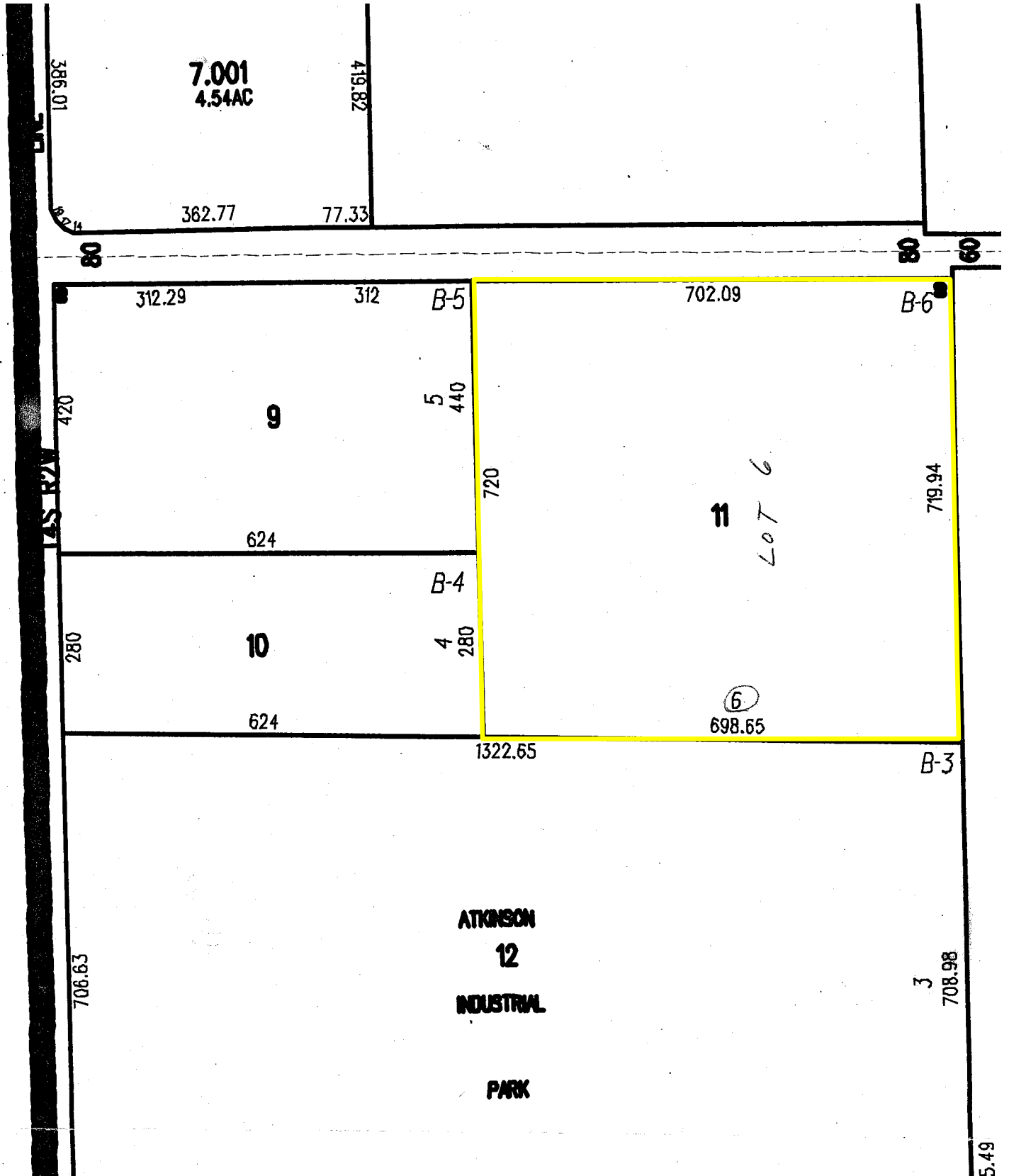
(256) 536.8809 Office
 (256) 679.3949 Mobile
 (256) 536.9119 Fax
 Email: Wesley@CrunkletonAssociates.com

201 Williams Avenue, Suite 200
 Huntsville, AL 35801
www.CrunkletonAssociates.com

| | 1 Mile Radius | 3 Mile Radius | 5 Mile Radius |
|------------------|---------------|---------------|---------------|
| Total Population | 795 | 15,821 | 46,391 |
| Average Income | \$106,456 | \$71,673 | \$84,359 |
| Median Age | 36.5 | 32.6 | 34.8 |

CRUNKLETON & ASSOCIATES, LLC

COMMERCIAL INVESTMENT REAL ESTATE



PHONE: 256.536.8809

FAX: 256.536.9119