

# Retail Land Available

*Prime Corner Lot at High Traffic Intersection*



***Memorial Pkwy & Winchester Road, Huntsville, Alabama***

This 2.5 acre, high traffic corner lot is located at the intersection of Memorial Parkway and Winchester Road, with excellent access from both roads; high visibility; and combined traffic of 54,000 VPD. Highest and Best uses for this property include fast food, grocery, drug store, or convenience store, or a bank. Zoned C-4, Highway Business.

**Priced competitively at \$1,364,300.**



## Contact Information

### **Mike Ellis**

(256) 536.8809 Office

(256) 509.1483 Cell

(256) 536.9119 Fax

Email: [Mike@CrunkletonAssociates.com](mailto:Mike@CrunkletonAssociates.com)

201 Williams Avenue, Suite 200

Huntsville, Alabama 35801

[www.CrunkletonAssociates.com](http://www.CrunkletonAssociates.com)

### Three Mile Trade Area

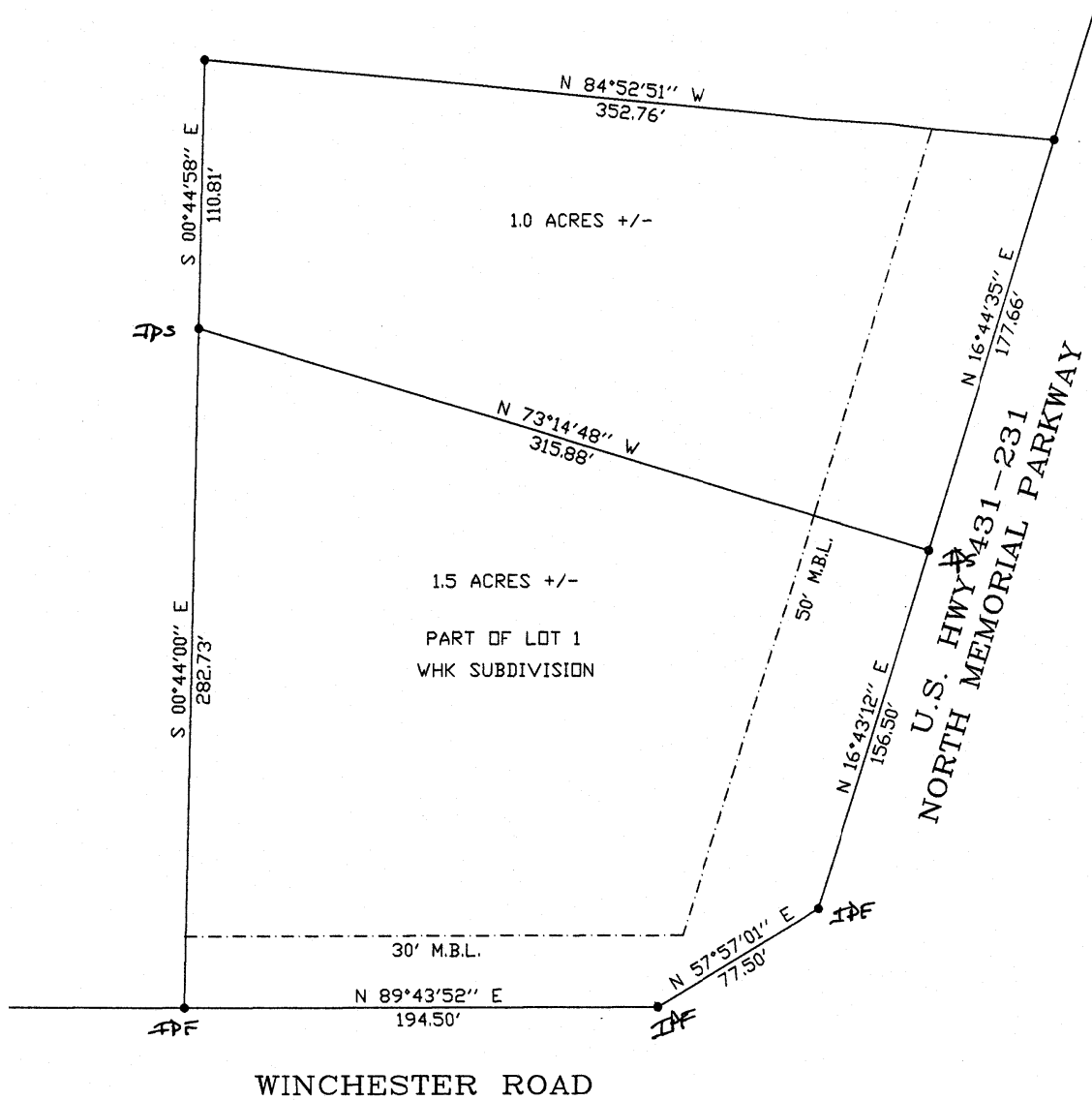
Population	27,211
Average Household Income	\$52,370
Daily Traffic Count Memorial Parkway	40,000 VPD
Daily Traffic Count Winchester Road	14,000 VPD

CRUNKLETON & ASSOCIATES, LLC

COMMERCIAL INVESTMENT REAL ESTATE

# CRUNKLETON & ASSOCIATES, LLC

## COMMERCIAL INVESTMENT REAL ESTATE



*McDonald's and BP station are located directly across Winchester Road from subject lot.*

*\* Information deemed reliable, but not guaranteed.*

PHONE: 256.536.8809

FAX: 256.536.9119